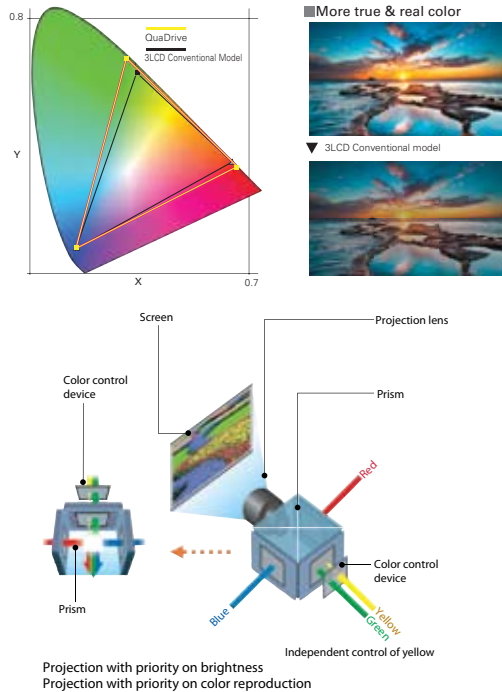


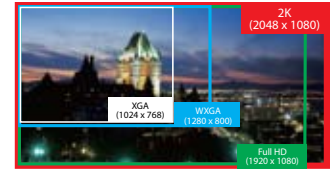
## QuaDrive Engine

“QuaDrive” optical engine in the HF15000L, HF10000L, XF1000, HP7000L and XP200L is a newly developed and highly advanced version of the conventional 3LCD system, and features an additional Color Control Device. By controlling the amount of yellow light, the Color Control Device increases the level of color purity by approximately 20% compared with our previous model.<sup>\*\*1</sup> This gives images remarkable levels of both brightness and color.



## High-Resolution 2K Panels

New LCD panels with an inorganic alignment layer offer higher resolution than full HD, to display Real 2K (2048 x 1080 dots) images. Full-HD (1920 x 1080 dot) video from Blu-Ray Discs can be displayed in the original format without compression.



- 2K: PLC-HF15000L, HF10000L
- 1080p: PLC-HP7000L

## Active Maintenance Filter (AMF)

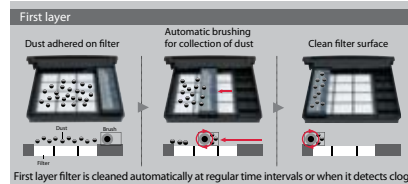
The Active Maintenance Filter (AMF) sensor detects the intake air volume. If the volume is less than the prescribed level, the filter is automatically advanced and a clean filter surface is set in position. The filter can also be replaced without having to use any tools.



- Available for: PLC-HF10000L, XF1000, HP7000L, XP200L

## Newly Developed Active Maintenance Cleaner (AMC)

SANYO's new projectors employ an Active Maintenance Cleaner (AMC) that automatically cleans the filter on a regular basis and includes a blockage-detecting sensor. If dust infiltrates a projector—in particular, the optical engine at the heart of the projector—it adversely affects brightness and contrast performance. Protection from dust is therefore an extremely important part of maintaining a projector's capabilities. AMC incorporates three high-performance filters and a special brush. After it brushes off and collects large dust particles from the first filter, remaining smaller dust particles are captured by an electrostatic honeycomb filter and an electrostatic pleated filter. Even if the device is installed in a high location, such as a ceiling, it is not necessary to clean the filter. It keeps functioning for 12,000 hours<sup>\*\*1</sup>, without requiring maintenance.



- Available for: PLC-HF15000L
- <sup>\*\*1</sup>When lamp control: Normal mode is selected. This value is calculated through the company's independent test in reference to the JIS D0207 test method. The filter replacement period is an estimate and changes according to the use environment.

## Specifications

Model name	PLC-HF15000L	PLC-HF10000L	PLC-XF1000	PLC-HP7000L	PLC-XP200L
Resolution	2K (2048 x 1080)	2K (2048 x 1080)	XGA (1024 x 768)	1080p (1920 x 1080)	XGA (1024 x 768)
Brightness (typical)	15000 Lumens	10000 Lumens	12000 Lumens	7000 Lumens	7000 Lumens
Panel System	Color Control x 1 1.65" TFT Poly x 3	Color Control x 1 1.64" TFT Poly x 3	1.8" TFT Poly x 3 Color Control x 1	1.2" TFT Poly x 3 Color Control	1.3" TFT Poly x 3 Color Control x 1
Number of Pixels	6,635,520 (2,211,840 x 3)	6,635,520 (2,211,840 x 3)	2,359,296 (786,432 x 3)	6,220,800 (2,073,600 x 3)	2,359,296 (786,432 x 3)
Contrast Ratio (Full on / off)	3000:1	3000:1	4000:1	2700:1	2200:1
Aspect Ratio	17:9	17:9	4:3	16:9	4:3
Projection Lamp (s)	380W UHP x 4	380W UHP x 2	330W NSHA x 2	380W NSHA	330W NSHA
Voltage	200 - 240 V	120 - 240 V	100 - 240 V	100 - 240 V	100 - 240 V
Weight (lbs.)	103.6 lbs.	60.0 lbs.	60.8 lbs.	25.6 lbs.	25.1 lbs.
Dimensions (inch)	25.6 x 13.7 x 32.1 inch	20.9 x 10.6 x 29.8 inch	20.9 x 10.6 x 29.8 inch	14.6 x 7.4 x 17.3 inch	14.6 x 7.4 x 17.3 inch
Digital Interface (HDCP Compatible)	DVI-D, HDMI	DVI-D, HDMI	DVI-D	DVI-D, HDMI	DVI-D
Analog Interface	5BNC, D-sub 15 pin, S-Video	5BNC, D-sub 15 pin, S-Video	5BNC, D-sub 15 pin, S-Video	5BNC, D-sub 15 pin, 3RCA, S-Video	5BNC, D-sub 15 pin, 3RCA, S-Video
Network Control / Admin.	Yes	Yes	Optional (PJ Net)	Yes / Optional (PJ Net)	Optional (PJ Net)

## PLC-HF/XF Series Lenses

Model	Type (Zoom)		UD/Ratio		Throw Ratio		F Stop
			HF Series	XF Series	HF Series	XF Series	
LNS-W03/E	Short	(Fixed)	1:1	1:1	0.8:1	0.8:1	2.6
LNS-W01Z	Short	(Fixed)	10:0-0:10	8:0-0:8	1.2:1	1.2:1	2.5
LNS-W06	Short	(x1.3)	10:0-0:10	8:0-0:8	1.2-1.5:1	1.2-1.5:1	2.3-2.8
LNS-W02Z	Short	(x1.3)	10:0-0:10	8:0-0:8	1.4-1.8:1	1.4-1.8:1	2.5-2.9
LNS-W04	Short	(x1.3)	10:0-0:10	8:0-0:8	1.5-2.0:1	1.5-2.0:1	1.7-2.3
LNS-S04	Standard	(x1.3)	10:0-0:10	10:0-0:10	2.0-2.6:1	2.0-2.6:1	2.0-2.3
LNS-S03	Standard	(x1.3)	10:0-0:10	10:0-0:10	2.6-3.5:1	2.6-3.5:1	1.7-2.6
LNS-M02	Long	(x1.3)	10:0-0:10	10:0-0:10	3.5-4.5:1	3.5-4.5:1	2.0-2.6
LNS-T02/E	Long	(x1.4)	10:0-0:10	10:0-0:10	4.4-6.2:1	4.4-6.2:1	2.0-2.9
LNS-T01Z	Long	(Fixed)	10:0-0:10	10:0-0:10	6.9:1	6.9:1	2.0
LNS-T03	Ultra Long	(x1.4)	10:0-0:10	10:0-0:10	6.3-9.0:1	6.3-9.0:1	2.2-2.5

## PLC-HP/XP Series Lenses

Model	Type (Zoom)		UD/Ratio		Throw Ratio		F Stop
			HP Series	XP Series	HP Series	XP Series	
LNS-W34	Short	(Fixed)	1:1	N/A	0.8:1	N/A	2.3
LNS-W32	Short	(Fixed)	N/A	1:1	N/A	0.8:1	2.5
LNS-W33	Short	(x1.4)	10:0 - 1:1	3:1-1:3	1.3-1.8:1	1.2-1.8:1	2.1-2.8
LNS-W31A	Short	(x1.4)	N/A	10:0 - 1:1	N/A	1.3-1.8:1	2.5-3.1
LNS-S32	Standard	(x1.3)	10:0 - 1:1	3:1-1:3	1.8-2.3:1	1.7-2.3:1	1.7-2.1
LNS-S31	Standard	(x1.3)	N/A	10:0 - 1:1	N/A	1.8-2.3:1	1.7-2.0
LNS-T34	Long	(x1.8)	10:0 - 1:1	3:1-1:3	2.3-4.2:1	2.3-4.2:1	2.1-2.8
LNS-T31A	Long	(x1.8)	N/A	10:0 - 1:1	N/A	2.3-4.2:1	2.0-2.9
LNS-T32	Ultra Long	(x1.4)	7:-1 - 1:1	10:0 - 1:1	4.2-5.7:1	4.2-6.0:1	2.1-2.7
LNS-T33	Ultra Long	(x1.5)	7:-1 - 1:1	10:0 - 1:1	5.7-8.9:1	5.7-9.0:1	2.2-2.7

SANYO. . . Providing More Projector Solutions

Toll free: **888-337-1215** [www.sanyoprojectors.com](http://www.sanyoprojectors.com)

©2011 SANYO North America Corporation.

